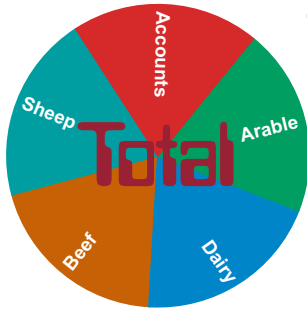


# FIELD MANAGEMENT

## Your Total Crop Recording Solution



Sum-It's Total Field Management Program is designed to improve efficiency of field recording and to aid with crop assurance schemes, including machinery servicing and produce store records.

The program's strength lies in its ease of input and flexibility of reporting - the user defines their own criteria against which comparison reports can be obtained. The program's unique ability to integrate seamlessly with the Total Accounts Program provides full upgradeability when required in the future.

Record **individual field cropping** records - both inputs and outputs

Enter data either on the office computer or **via a palmtop** in the field

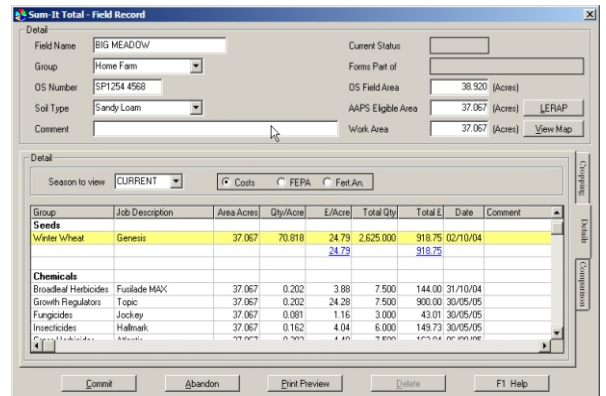
**Flexible Season Start Markers** will handle a variety of crops over **any length of season** - from weeks to decades

**Switch** between **Acres & Hectares** with one button at any time

Record data quickly through **Block-booking** facility

**Analyse** your **costings and yields** by any criteria

**Compare fields** by crop and variety, soil type etc.



View **complete historical records**, with **soil analysis**, on screen at any time

Keep abreast with **FEPA** and **Assurance Scheme compliance**

See **accumulated fertiliser analysis** for **NVZs** and **RB209 Data** against each field

Built-in **Stock Control** keeps tab on store records

Keep **machinery maintenance** and **Grain Store records** up to date

Plan **future crop rotations** as far forward as you need

Run **multiple sets of field records** with just one program

T Name	Crop Group	Variety	Hctrs	Seeds E	Ferts E	Sprays E
F1 COPPERS COTTAGE	Potatoes	Main Piper	18 000	350 00	0 00	17 99
F1 JAKES HILL	Potatoes	Main Piper	10 000	350 00	0 00	10 72
F1 PARK FARM	Potatoes	Main Piper	7 500	350 00	0 00	6 43
Total for Potatoes:			35 500	350 00	0 00	13 50
F1 WILLOW WOOD (Part)	Set-aside	Fallow	6 500	0 00	0 00	0 00
F1 DEER PARK (Part B)	Set-aside	Set-aside	1 000	0 00	0 00	0 00
Total for Set-aside:			7 500	0 00	0 00	0 00
F1 HALL END	Winter Barley	Pearl W/ Barley	9 800	46 01	42 43	78 61
F1 IRON GATE FIELD	Winter Barley	Pearl W/ Barley	21 000	46 01	42 43	78 61
Total for Winter Barley:			30 800	92 02	84 86	157 22
F1 BIG MEADOW	Winter Wheat	Genesis	15 000	61 25	71 03	93 92
F1 LOWER BARN	Winter Wheat	Genesis	9 000	61 25	71 03	93 92
F1 PHLOX MEADOW	Winter Wheat	Genesis	15 150	61 25	71 03	93 92
Total for Winter Wheat:			39 150	183 75	213 09	281 76
Total for All:			189 140	87 52	36 15	39 09

**Starter Version**

**£ 345**

**Standard Version**

**£ 645**

**Prices include 3 months Support with Updates and exclude VAT**

SUM-IT Computer Systems Ltd., Samuel House, Chinnor Road, Thame, Oxfordshire OX9 3NU  
Tel: 01844 213003 - Fax: 01844 214722 - E-mail: sales@sum-it.co.uk - Web: www.sum-it.co.uk



**SUM-IT**

The most important hallmark for all SUM-IT's Total Programs, is that for all they provide, they are SIMPLE-TO-USE. They have all been written with the User in mind gaining the maximum of output from the minimum of input and requiring no previous knowledge of computers to operate them.

## TOTAL FIELD MANAGEMENT FEATURES

Features	Starter Level	Standard Level
Field Applications	✓	✓
Stock Records	✓	✓
Crop Rotation Planner	✓	✓
Block-book Operations	✓	✓
Automatic Average Cost Price	✓	✓
Crop Summary Reports	✓	✓
Split Field Facility	✓	✓
Soil Analysis Records	✓	✓
Produce Store Weekly Checks	✓	✓
Sprayer Calibration Report	✓	✓
Machinery Maintenance Records	✓	✓
RB209 Information Report	✓	✓
NVZ Fertiliser Analysis Report	✓	✓
NVZ Muck Planner	✓	✓
Gross Margin Reports	✓	✓
Crop Yield Analysis	✓	✓
Agronomy Notes	✓	✓
Acres/Hectres Switch	✓	✓
Net Margin Reports	-	✓
Record Planned Operations	-	✓
FEPA Spray Records	-	✓
Cost per Tonne Reports	-	✓
Farm Assurance Reports	-	✓
LERAP Buffer Zone Calculator	-	✓
Operator Worksheets	-	✓
Advanced Selective Reports	-	✓
Link to PT Mapper software	-	✓
Multi-Holdings	-	✓
Gatekeeper Spray Plans Importer	-	✓
Muddy Boots Spray Plans Importer	-	✓
Integrates with Total Accounts	✓	✓
Data Export to Excel & Word etc.	○	✓
Field App for Smartphones/Tablets	○	○
Links with Patchwork Software	-	○
Upgrade to Standard Field	○	-
<b>Software Pricing (excl. VAT)</b>	<b>£ 345</b>	<b>£ 645</b>

○ = Optional Extras Upgrade option to Standard Field from Starter Field costs £345

Sum-It Total software has been designed using the latest Windows technology and operates on Windows from XP through to 10. System requirements are 512MB RAM, 100MB HD Capacity, 500Mhz Processor.

To find out more about how Sum-It's Total Field Management can help you - just give our Sales team a call today on 01844 213003. They can arrange on-farm demonstrations and provide demonstration CDs.