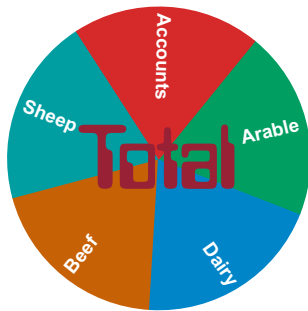


# FARM ACCOUNTS

## Your Total Accounting Solution



Sum-It's Total Accounts Program paves the way to SIMPLIFIED book-keeping for farms and many other businesses, providing an up-to-date source of information in numerous reports. It can operate either as a full accounts package or just a Cash Book.

It aids management decision-making and saves time (and Accounts "Donkey work") with totally automatic VAT and Year-End Reporting. The program's unique ability to integrate seamlessly with the physical records in the Total enterprise modules provides a full upgrade path when required.

Heard about HMRC's Making Tax Digital On-Line VAT starting April 2019?

You can relax, Total Accounts will be fully compliant

Calculate your **VAT Return** instantly and **submit** it **on-line** direct to **HMRC**

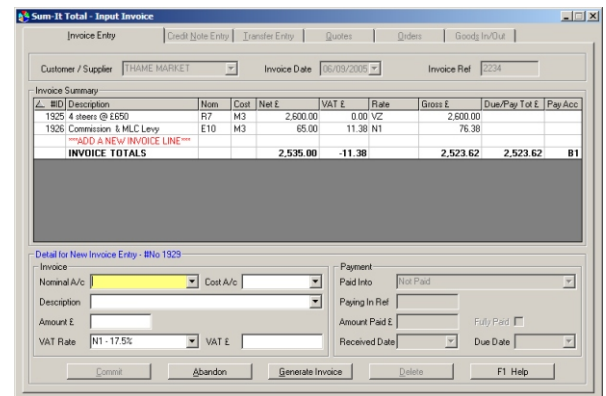
Choose to input your invoices **before** or **after** they're paid

Process **Self-Billing Invoices** painlessly

Always know your **current Debtors and Creditors**

Monitor your **bank balance** at all times

Minimise your Accountant's work and **increase productivity**



Identify how each **enterprise is performing** throughout the year

**Pin-point costs** to each tractor or other machinery

View **complete historical records** on screen **at any time**

**Track down any item**, bought or sold, **in seconds**

Prepare **Cash Flow Budgets** to compare against Actual Data

**Email your data** to your Accountant to read on their **FREE Auditor version**

A screenshot of the 'Sum-It Total - Audit Trail by Account' software window. It shows a table of transactions with columns for ID, Date, Ref, Net £, VAT £, Gross £, Description, and Customer/Supplier. The table is filtered by 'Nom FROM ALL' and 'Date FROM 01/04/2005 TO 31/03/2006'. The table contains several rows of data grouped by account type (E14 - Machinery Repairs, E17 - Fencing/Ground Works, E19 - Fuel & Oils, E20 - Electricity & Gas).

**Starter Version**  
(Cashbook Only)

**£ 425**

**Standard Version**

**£ 695**

**Prices include 3 months Support with Updates and exclude VAT**

SUM-IT Computer Systems Ltd., Samuel House, Chinnor Road, Thame, Oxfordshire OX9 3NU  
Tel: 01844 213003 - Fax: 01844 214722 - E-mail: sales@sum-it.co.uk - Web: www.sum-it.co.uk

**SUM-IT**



The most important hallmark for all SUM-IT's Total programs, is that for all they provide, they are SIMPLE-TO-USE. They have all been written with the User in mind, gaining the maximum of output from the minimum of input and requiring no previous knowledge of computers to operate them.

## TOTAL ACCOUNTS FEATURES

Features	Starter Level	Standard Level
Cashbook Only	✓	-
Cashbook or Double-Entry Accounts	-	✓
VAT Audit Trail	✓	✓
On-Line VAT Submission to HMRC	✓	✓
Multi-Bank Reconciliation	✓	✓
Enterprise Costings	✓	✓
Machinery Costings	✓	✓
Contras	✓	✓
Profit & Loss	✓	✓
Trial Balance	✓	✓
Audit Trail	✓	✓
Year-End Accountant Reports	✓	✓
Budgeted Cashflow	✓	✓
View/Pay Debtors & Creditors	-	✓
Prints Statements & Remittances	-	✓
Prints Labels	-	✓
Customer/Supplier Ledger	-	✓
Automatic Standing Orders	-	✓
Asset/Liability Reports	-	✓
Balance Sheet Report	-	✓
Advanced Enterprise Reporting	-	✓
Powerful Selective Reports	-	✓
Links to Accountants' Software	-	✓
Multi-Business	-	✓
Budget vs Actual Comparisons	O	✓
Data Export to Excel & Word etc.	O	✓
Invoice Generator	O	O
Sales Order Processor	O	O
Contractors Diary	O	O
BACS Payments Exporter	O	O
Payroll Module	O	O
Upgrade to Standard Accounts	O	-
<b>Software Pricing (excl. VAT)</b>	<b>£ 425</b>	<b>£ 695</b>

O = Optional Extras Upgrade option to Standard Accounts from Starter Accounts costs £345

Sum-It Total software has been designed using the latest 32-bit Windows technology and operates on all versions of Windows from XP up to 10. System requirements are 256MB RAM, 100MB HD Capacity, 500Mhz Processor.

To find out more about how Sum-It's Total Farm Accounts can help you - just give our Sales team a call today on 01844 213003. They can arrange on-line or on-farm demonstrations and provide demonstration CDs.