



Total Dairy
your dairy management solution

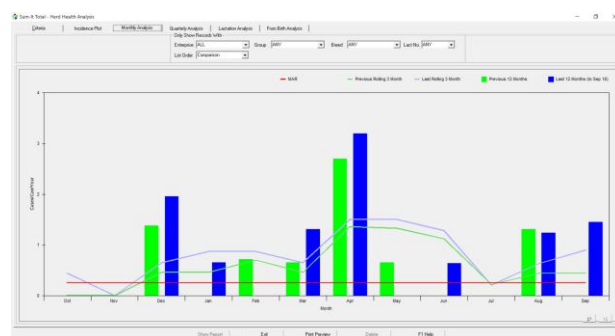
SUM-IT
AGRICULTURAL SOFTWARE



Sum-It's Total Dairy Herd Management is designed as a tool to aid both the operation and management aspects of running a dairy herd. Easily accessible data is entered either via the PC or with the Total Cattle App.

Total Dairy stores past and present individual cow performance records to produce comprehensive reports, providing you with all the information you need to know to make cost-effective and productive decisions. The program updates all legislative and analytical information to maintain user compliance with assurance and regulatory bodies and has the unique ability to integrate seamlessly with the Total Accounts Module for full upgradability when required.

- See complete **individual cow records** at a glance
- Keep milk production on target with **accurate quota predictions**
- **Import milk records** from **QMMS, NMR, and CIS**
- Check bloodlines have not crossed in previous generations for **planned matings**
- Show all **statutory stock movements** to DEFRA and Local Authority standards
- Identify **submission** and **conception** rates to analyse your herd's **fertility** in depth
- Send **Pedigree Registrations** direct to **HUKI** electronically from the program
- Prepare **Action Lists** for the Vet to assist with pre-visit planning



Age/DOB	Alt	Sex	Current / Previous	DOB	Color	Calving	Calving Int	Days
00 201014	Calved			00 201014	Red	00	00	1984
00 201015	Calved			00 201015	Red	00	00	1989
00 201016	Str Cow		433 Tuber Calves	00 201016	Red	00	00	1993
00 201017	Calved			00 201017	Red	00	00	1993
00 201018	Str Cow		433 Tuber Calves	00 201018	Red	00	00	1993
00 201019	Str Cow		433 Tuber Calves	00 201019	Red	00	00	1993
00 201020	Str Cow		433 Tuber Calves	00 201020	Red	00	00	1993
00 201021	Str Cow		433 Tuber Calves	00 201021	Red	00	00	1993
00 201022	Str Cow		433 Tuber Calves	00 201022	Red	00	00	1993
00 201023	Str Cow		433 Tuber Calves	00 201023	Red	00	00	1993
00 201024	Str Cow		433 Tuber Calves	00 201024	Red	00	00	1993
00 201025	Str Cow		433 Tuber Calves	00 201025	Red	00	00	1993
00 201026	Str Cow		433 Tuber Calves	00 201026	Red	00	00	1993
00 201027	Str Cow		433 Tuber Calves	00 201027	Red	00	00	1993
00 201028	Str Cow		433 Tuber Calves	00 201028	Red	00	00	1993
00 201029	Str Cow		433 Tuber Calves	00 201029	Red	00	00	1993
00 201030	Str Cow		433 Tuber Calves	00 201030	Red	00	00	1993
00 201031	Str Cow		433 Tuber Calves	00 201031	Red	00	00	1993
00 201032	Str Cow		433 Tuber Calves	00 201032	Red	00	00	1993
00 201033	Str Cow		433 Tuber Calves	00 201033	Red	00	00	1993
00 201034	Str Cow		433 Tuber Calves	00 201034	Red	00	00	1993
00 201035	Str Cow		433 Tuber Calves	00 201035	Red	00	00	1993
00 201036	Str Cow		433 Tuber Calves	00 201036	Red	00	00	1993
00 201037	Str Cow		433 Tuber Calves	00 201037	Red	00	00	1993
00 201038	Str Cow		433 Tuber Calves	00 201038	Red	00	00	1993
00 201039	Str Cow		433 Tuber Calves	00 201039	Red	00	00	1993
00 201040	Str Cow		433 Tuber Calves	00 201040	Red	00	00	1993
00 201041	Str Cow		433 Tuber Calves	00 201041	Red	00	00	1993
00 201042	Str Cow		433 Tuber Calves	00 201042	Red	00	00	1993
00 201043	Str Cow		433 Tuber Calves	00 201043	Red	00	00	1993
00 201044	Str Cow		433 Tuber Calves	00 201044	Red	00	00	1993
00 201045	Str Cow		433 Tuber Calves	00 201045	Red	00	00	1993
00 201046	Str Cow		433 Tuber Calves	00 201046	Red	00	00	1993
00 201047	Str Cow		433 Tuber Calves	00 201047	Red	00	00	1993
00 201048	Str Cow		433 Tuber Calves	00 201048	Red	00	00	1993
00 201049	Str Cow		433 Tuber Calves	00 201049	Red	00	00	1993
00 201050	Str Cow		433 Tuber Calves	00 201050	Red	00	00	1993
00 201051	Str Cow		433 Tuber Calves	00 201051	Red	00	00	1993
00 201052	Str Cow		433 Tuber Calves	00 201052	Red	00	00	1993
00 201053	Str Cow		433 Tuber Calves	00 201053	Red	00	00	1993
00 201054	Str Cow		433 Tuber Calves	00 201054	Red	00	00	1993
00 201055	Str Cow		433 Tuber Calves	00 201055	Red	00	00	1993
00 201056	Str Cow		433 Tuber Calves	00 201056	Red	00	00	1993
00 201057	Str Cow		433 Tuber Calves	00 201057	Red	00	00	1993
00 201058	Str Cow		433 Tuber Calves	00 201058	Red	00	00	1993
00 201059	Str Cow		433 Tuber Calves	00 201059	Red	00	00	1993
00 201060	Str Cow		433 Tuber Calves	00 201060	Red	00	00	1993
00 201061	Str Cow		433 Tuber Calves	00 201061	Red	00	00	1993
00 201062	Str Cow		433 Tuber Calves	00 201062	Red	00	00	1993
00 201063	Str Cow		433 Tuber Calves	00 201063	Red	00	00	1993
00 201064	Str Cow		433 Tuber Calves	00 201064	Red	00	00	1993
00 201065	Str Cow		433 Tuber Calves	00 201065	Red	00	00	1993
00 201066	Str Cow		433 Tuber Calves	00 201066	Red	00	00	1993
00 201067	Str Cow		433 Tuber Calves	00 201067	Red	00	00	1993
00 201068	Str Cow		433 Tuber Calves	00 201068	Red	00	00	1993
00 201069	Str Cow		433 Tuber Calves	00 201069	Red	00	00	1993
00 201070	Str Cow		433 Tuber Calves	00 201070	Red	00	00	1993
00 201071	Str Cow		433 Tuber Calves	00 201071	Red	00	00	1993
00 201072	Str Cow		433 Tuber Calves	00 201072	Red	00	00	1993
00 201073	Str Cow		433 Tuber Calves	00 201073	Red	00	00	1993
00 201074	Str Cow		433 Tuber Calves	00 201074	Red	00	00	1993
00 201075	Str Cow		433 Tuber Calves	00 201075	Red	00	00	1993
00 201076	Str Cow		433 Tuber Calves	00 201076	Red	00	00	1993
00 201077	Str Cow		433 Tuber Calves	00 201077	Red	00	00	1993
00 201078	Str Cow		433 Tuber Calves	00 201078	Red	00	00	1993
00 201079	Str Cow		433 Tuber Calves	00 201079	Red	00	00	1993
00 201080	Str Cow		433 Tuber Calves	00 201080	Red	00	00	1993
00 201081	Str Cow		433 Tuber Calves	00 201081	Red	00	00	1993
00 201082	Str Cow		433 Tuber Calves	00 201082	Red	00	00	1993
00 201083	Str Cow		433 Tuber Calves	00 201083	Red	00	00	1993
00 201084	Str Cow		433 Tuber Calves	00 201084	Red	00	00	1993
00 201085	Str Cow		433 Tuber Calves	00 201085	Red	00	00	1993
00 201086	Str Cow		433 Tuber Calves	00 201086	Red	00	00	1993
00 201087	Str Cow		433 Tuber Calves	00 201087	Red	00	00	1993
00 201088	Str Cow		433 Tuber Calves	00 201088	Red	00	00	1993
00 201089	Str Cow		433 Tuber Calves	00 201089	Red	00	00	1993
00 201090	Str Cow		433 Tuber Calves	00 201090	Red	00	00	1993
00 201091	Str Cow		433 Tuber Calves	00 201091	Red	00	00	1993
00 201092	Str Cow		433 Tuber Calves	00 201092	Red	00	00	1993
00 201093	Str Cow		433 Tuber Calves	00 201093	Red	00	00	1993
00 201094	Str Cow		433 Tuber Calves	00 201094	Red	00	00	1993
00 201095	Str Cow		433 Tuber Calves	00 201095	Red	00	00	1993
00 201096	Str Cow		433 Tuber Calves	00 201096	Red	00	00	1993
00 201097	Str Cow		433 Tuber Calves	00 201097	Red	00	00	1993
00 201098	Str Cow		433 Tuber Calves	00 201098	Red	00	00	1993
00 201099	Str Cow		433 Tuber Calves	00 201099	Red	00	00	1993
00 201100	Str Cow		433 Tuber Calves	00 201100	Red	00	00	1993

- Access cow records and record actions on an with the **App on an Android device** outside at any time
- Support management and decision making with **up to date fertility** and **cow/ milk performance** reports
- Send **Passport Applications** and **Stock Movements** electronically direct to **BCMS** via the **CTS Web Services**
- **Youngstock records** are included plus sales analysis data for fattening beef animals, along with liveweight gain reports
- Reduce paperwork and comply with legislation by replacing your manual **medicine book** with computerised records for medicine stock and usage

Total Dairy
(Full Herd Management)

£ 695

Price includes 3 months Support and is subject to VAT

Tel: 01844 213003

Email: ben@sum-it.co.uk
caitlyn@sum-it.co.uk

Web: sum-it.co.uk

SUM-IT Computer Systems Ltd.

Samuel House, Chinnor Road, Thame,
Oxfordshire, OX9 3NU

The most important hallmark for all SUM-IT's Total programs, is that for all they provide, they are SIMPLE-TO-USE. They have all been written with the User in mind, gaining the maximum output from the minimum input and requiring no previous knowledge of computers to operate them. With any Total module purchase receive three months of Gold Level support completely free, this includes support calls on a non-Premium landline and weekly online back-ups of your data.

Optional Modules & Equipment

Milk Recording Partnerships

Alongside links with NMR and CIS, Quality Milk Management Services (QMMS) provide a very cost-effective and consultative milk testing service.

QMMS combine milk testing results with herd's fertility and health to highlight client improvements to the overall health and performance of their dairy enterprise.

TotalVet

QMMS have designed a universal dairy data analysis tool, developed by SUM-IT, that enables vets, consultants and farmers to look at any herd's records in great depth, identifying trends and providing a benchmarking tool regardless of the source of original herd data.

Parlour Interface Module

Links Total Dairy to many in-parlour recording and heat detection systems so that there is no need for dual input of data. Milk yields can be auto-updated per cow record from the parlour and new feed calculated and sent back with other activities onto the parlour system.

Total Bovine App

Record any event as it happens with an Android Smartphone or Tablet. Sync data via Wi-Fi with Total Dairy on the computer to either review the status of each animal whilst out and about or input new events, such as calvings, drug treatments and weights, as you do them.

Electronic Weigher Interface Module

Import weigh session files from Tru-Test, Gallagher and Iconix into the Total Dairy Module. From the data, a range of reports and scatter graphs are automatically updated providing in-depth analysis and Daily Liveweight Gains across individual animals.

Hardware Requirements

Total operates on Windows 10/11 and Windows Server and will require 500MB of Hard Disk capacity plus an occasional internet connection to receive program updates and communicate with HMRC and BCMS. Hardware should have a minimum of 4GB Ram.

To find out more about how SUM-IT's Total Dairy program can help you, give our Sales team a call on **01844 213003**. They can arrange an on-line or on-farm demonstration and provide demonstration data for you to have a go yourself.

Total Dairy Features

Features	Total Dairy
Livestock Sales & Purchases	●
Records all Calving Details	●
Statutory Stock Movement Reports	●
Passports/Movements link via CTS to BCMS	●
BCMS Instant Reconciliation	●
Herd Book Register	●
Records fertility & health events	●
Drug Treatments & Basic Medicine Book	●
NOAH Medicine Book/Usage Report	●
Fertility Action Lists & Events Diary	●
Bulling/Service/PD/Dry/Calf Due Dates	●
Johnes Testing Reports (QMMS Clients Only)	●
QMMS Reports (QMMS Clients Only)	●
Mobility/Condition Scoring	●
Fertility Action Chart & Table	●
Herd Health Planning & Analysis	●
Medicine/Semen/Feed Stock Control	●
Block-booking of Events	●
TB Movements Control	●
Submission & Conception Rates	●
Milk Recording & Analysis	●
Individual Animal Record Cards	●
Past Lactation Calving Histories	●
Unlimited Pedigree Records	●
EBV's	●
Feed Calculations (In/Out of Parlour)	●
Herd Summary Statistics	●
Milk Production Forecast	●
Pedigree Registrations to HUKI	●
Selective Performance Reports	●
Youngstock/Beef Records	●
Multi-Herd Capability	●
Data Export to Word/Excel etc.	●
Smartphone Dairy App	○
Parlour Interface Module	○
Price (excl.VAT)	£695
● = Module has this feature, ○ = Optional Extras.	



All prices exclude VAT.