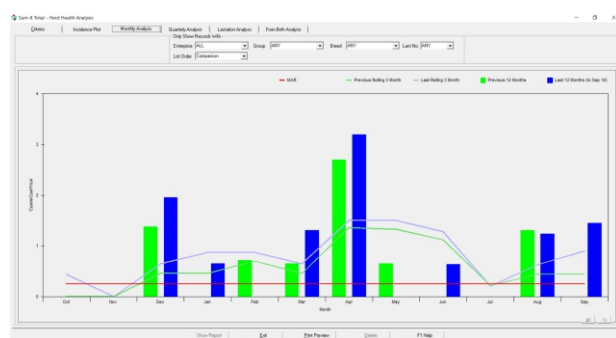




Total Dairy stores past and present individual cow performance records to produce comprehensive reports, providing you with all the information you need to know to make cost-effective and productive decisions. The program updates all legislative and analytical information to maintain user compliance with assurance and regulatory bodies and has the unique ability to integrate seamlessly with the Total Accounts Module for full upgradability when required.

- See complete **individual cow records** at a glance
- Keep milk production on target with **accurate quota predictions**
- **Import milk records** from **QMMS, NMR, and CIS**
- Check bloodlines have not crossed in previous generations for **planned matings**
- Show all **statutory stock movements** to DEFRA and Local Authority standards
- Identify **submission** and **conception** rates to analyse your herd's **fertility** in depth
- Send **Pedigree Registrations direct to HUKI** electronically from the program
- Prepare **Action Lists** for the Vet to assist with pre-visit planning



- Access cow records and record actions on an with the **App on an Android device** outside at any time
- Support management and decision making with **up to date fertility** and **cow/ milk performance** reports
- Send **Passport Applications** and **Stock Movements** electronically direct to **BCMS** via the **CTS Web Services**
- **Youngstock records are included** plus sales analysis data for fattening beef animals, along with liveweight gain reports
- Reduce paperwork and comply with legislation by replacing your manual **medicine book** with computerised records for medicine stock and usage

[illegible]

**Price includes 3 months Support and is subject to VAT**

**£ 695**

**Tel: 01844 213003**

**Email:** [ben@sum-it.co.uk](mailto:ben@sum-it.co.uk)  
[caitlyn@sum-it.co.uk](mailto:caitlyn@sum-it.co.uk)

**Web:** [sum-it.co.uk](http://sum-it.co.uk)

**SUM-IT Computer Systems Ltd.**  
Samuel House, Chinnor Road, Thame,  
Oxfordshire, OX9 3NU

The most important hallmark for all SUM-IT's Total programs, is that for all they provide, they are SIMPLE-TO-USE. They have all been written with the User in mind, gaining the maximum output from the minimum input and requiring no previous knowledge of computers to operate them. With any Total module purchase receive three months of Gold Level support completely free, this includes support calls on a non-Premium landline and weekly online back-ups of your data.

## Optional Modules & Equipment

### Milk Recording Partnerships

Alongside links with NMR and CIS, Quality Milk Management Services (QMMS) provide a very cost-effective and consultative milk testing service.

QMMS combine milk testing results with herd's fertility and health to highlight client improvements to the overall health and performance of their dairy enterprise.

### TotalVet

QMMS have designed a universal dairy data analysis tool, developed by SUM-IT, that enables vets, consultants and farmers to look at any herd's records in great depth, identifying trends and providing a benchmarking tool regardless of the source of original herd data.

### Parlour Interface Module

Links Total Dairy to many in-parlour recording and heat detection systems so that there is no need for dual input of data. Milk yields can be auto-updated per cow record from the parlour and new feed calculated and sent back with other activities onto the parlour system.

### Total Bovine App

Record any event as it happens with an Android Smartphone or Tablet. Sync data via Wi-Fi with Total Dairy on the computer to either review the status of each animal whilst out and about or input new events, such as calvings, drug treatments and weights, as you do them.

### Electronic Weigher Interface Module

Import weigh session files from Tru-Test, Gallagher and Iconix into the Total Dairy Module. From the data, a range of reports and scatter graphs are automatically updated providing in-depth analysis and Daily Liveweight Gains across individual animals.

### Hardware Requirements

Total operates on Windows 10 and Windows Server and will require 500MB of Hard Disk capacity plus an occasional internet connection to receive program updates and communicate with HMRC and BCMS. Hardware should have a minimum of 4GB Ram.

To find out more about how SUM-IT's Total Dairy program can help you, give our Sales team a call on **01844 213003**. They can arrange an on-line or on-farm demonstration and provide demonstration data for you to have a go yourself.

## Total Dairy Features

Features	Total Dairy
Livestock Sales & Purchases	●
Records all Calving Details	●
Statutory Stock Movement Reports	●
Passports/Movements link via CTS to BCMS	●
BCMS Instant Reconciliation	●
Herd Book Register	●
Records fertility & health events	●
Drug Treatments & Basic Medicine Book	●
NOAH Medicine Book/Usage Report	●
Fertility Action Lists & Events Diary	●
Bulling/Service/PD/Dry/Calf Due Dates	●
Johnes Testing Reports (QMMS Clients Only)	●
QMMS Reports (QMMS Clients Only)	●
Mobility/Condition Scoring	●
Fertility Action Chart & Table	●
Herd Health Planning & Analysis	●
Medicine/Semen/Feed Stock Control	●
Block-booking of Events	●
TB Movements Control	●
Submission & Conception Rates	●
Milk Recording & Analysis	●
Individual Animal Record Cards	●
Past Lactation Calving Histories	●
Unlimited Pedigree Records	●
EBV's	●
Feed Calculations (In/Out of Parlour)	●
Herd Summary Statistics	●
Milk Production Forecast	●
Pedigree Registrations to HUKI	●
Selective Performance Reports	●
Youngstock/Beef Records	●
Multi-Herd Capability	●
Data Export to Word/Excel etc.	●
Smartphone Dairy App	O
Parlour Interface Module	O
<b>Price (excl.VAT)</b>	<b>£695</b>
● = Module has this feature, O = Optional Extras.	